

Mahoni Deck Interlock is a flooring product for exterior and interior areas. It has been developed into an elegant product that combines aesthetics and ease of installation. It adds aesthetic value to your room while maintaining optimal floor strength and functionality.

Key innovations, such as hidden screws at each joint, make it stronger and more efficient in application.

Type	Thickness x Width x Length (mm)	Weight (Kg)	Area (m ²) per sheet	Application
L0	20 x 300 x 3000	28,3	0,90	Flooring
L1	20 x 300 x 3000	28,2	0,90	Flooring
L2	20 x 300 x 3000	28,1	0,90	Flooring
LR	20 x 300 x 3000	28,2	0,90	Flooring



Quick Installation



Interlock Innovation





GRC Mahoni Deck Interlock Installation Method

Application on the Frame

1



Use the recommended frame material for GRC Deck Interlock (e.g., a hollow frame measuring 60 × 40 × 2.3 mm, 75 × 45 × 2.3 mm, etc.).

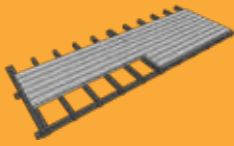
Ensure that the frame is flat and straight.

Install the GRC Deck Interlock frames with a frame spacing of 30 cm. Add frames in the joint areas (i.e., double frames). For screwing, maintain a minimum distance of 2.5 cm from the edge of the deck panel.

2



3



Install the GRC Deck Interlock on the outermost part, ensuring the tongue is on top. Screw the panel in place using a 20 mm GRC Super Panel screw. Ensure that the screws are placed within the provided screw line area.

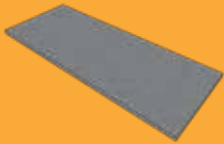
Use a special water based paint for fiber cement, apply a base coat (primer) before painting, and apply an anti-scratch coating for extra protection.

4



Application on the Floor (Screed)

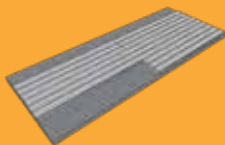
1



The floor area where the installation will take place must be free of dust and oil, and the surface must be smooth and level. There should be no concave areas on the ground surface.

For exterior installation, the area must be sloped at a minimum of 2% to prevent water from pooling.

2



For interior installation, the cement floor deck base must be level and smooth (troweled). Ensure there are no uneven areas.

3



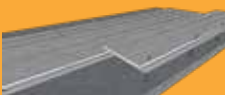
Use a 3 mm concrete drill bit and drill holes in the screw line area 2.5 cm from the edge and 50 cm thereafter. This drilling is only to mark the position of the plastic screw plug (fischer).

Lift the board and the markings will be visible. Then use a 6 mm concrete drill bit to drill 3 cm deep holes in the work floor.

Insert the S6 plastic plug (fischer) into each drilled point.

Reinstall the GRC Deck Interlock on the outermost edge, ensuring the "tongue" or lower edge is positioned on top. Secure it using No. 6 Tapping Screws, ensuring the screws are placed along the designated "screw line." Leave a gap of approximately 3 to 5 mm between deck joints. Zigzag installation is recommended.*

4



Paint using water-based paint. Apply a primer coat to the fiber cement before painting and an anti-scratch coating for extra protection.



Type L0





Type L1





Type L2

